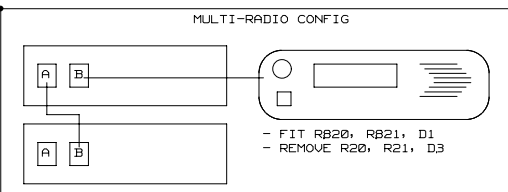
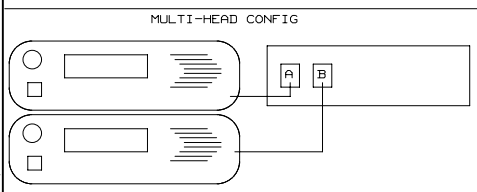


J1	
1	RX_AUD
2	1.3VB
3	RD_CH_TXD
4	RD_CH_PTT
5	RD_CH_MIC_AUD
6	ISO_GND
7	RD_CH_RXD
8	DGND
9	RD_CH_ON_OFF
10	RD_VOL_WIP_DC
11	RD_CH_SPI_DO
12	RD_CH_LE
13	RD_CH_GPTO1
14	RD_3V3
15	RD_CH_SPI_DI
16	RD_CH_SPI_CLK
17	RD_SPK-
18	RD_SPK+
SK18MM	

SOCKET B J3	
1	RX AUDIO
2	1.3VB
3	RS485+
4	AGND/PTT
5	MIC AUDIO
6	RS485-
7	DGND
8	ON/OFF
9	SKBRJ

SOCKET A J2	
1	RX AUDIO
2	1.3VB
3	RS485+
4	AGND
5	MIC AUDIO
6	RS485-
7	DGND
8	ON/OFF
9	SKBRJ



TELEMETRY HEAD

FIT AS 0 OHM LINK:
R900, R901, R910, R912, R916, 918

FIT AS 560 OHM: R920

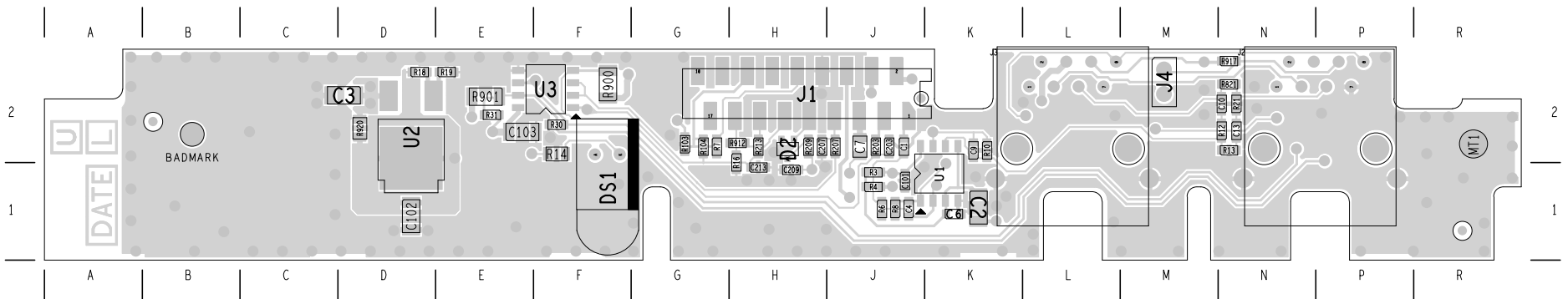
CHANGE TO 0 OHM LINK:
C1, R6, R8, R9
C10, R12, R10, C7

(NOTE DIFFERENT PAD SIZES)
FIT D1

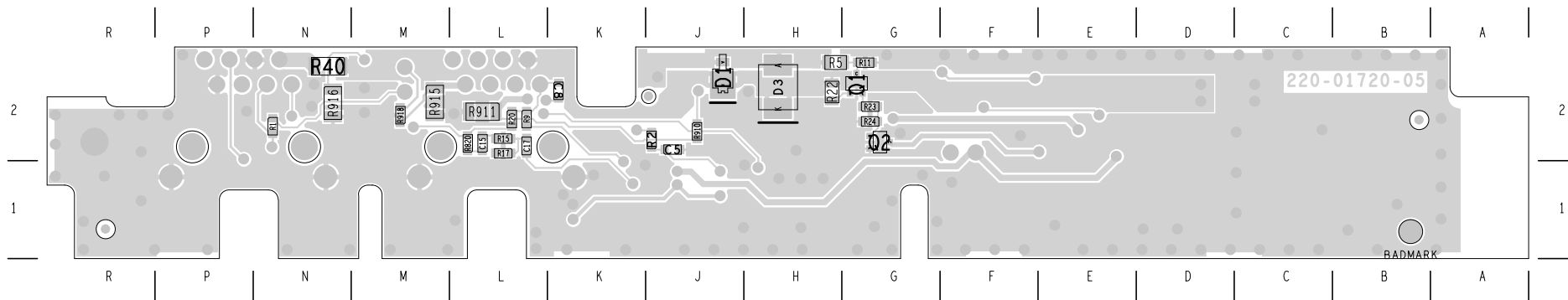
DO NOT INSTALL:
U1, U2, U3, J2
R911, R915, R917
R16, R15, R13, R21, R30, R31
R1, R2, R3, R4, R104, R18, R19, R16, R213
C4, C17, C15, C13, C9, C101, C2
C102, C213
D3

05B	SEE 220-01720-05B DCO RADIO REMOTE.EML	EDWIN T	CRAIG M	DAVE E	PETER C	02/02/06
05A	ADDRESS A RE-CIRCULATION ISSUE	EDWIN T	CRAIG M	DAVE E	PETER C	18/01/06
04B	CORRECT IPN REVISION IN TITLE_BLK	EDWIN T	CHRIS K	DAVE E	PETER C	09/11/05
04A	INCLUDE CHANGES REQUIRED FOR FESA	EDWIN T	CHRIS K	DAVE E	PETER C	15/11/05
REV/ISS	AMENDMENTS	DRAWN	CHKD	D.O.	APVD	DATE

© TAIT ELECTRONICS		A1
TM8200 RADIO REMOTE PCB		
IPN:	ISSUE:	VARIANT NUMBER:
220-01720-05	B	-
FILE DATE: Thu Feb 02 12:02:48 2006		
ENGINEER:	FILE NAME:	SHEET NUMBER:
SANDERS C	220_01720	1 OF 1



TAIT ELECTRONICS	IPN: 220-01720-05	ISS: B	DATE: 2Feb06	SCALE: NTS
TM8200 Radio Remote LAYOUT-PRIMARY-SIDE				



TAIT ELECTRONICS	IPN: 220-01720-05	ISS: B	DATE: 2Feb06	SCALE: NTS
TM8200 Radio Remote LAYOUT-SECONDARY-SIDE				